



# Former Holtville Rocket Target 1R (#94) Remedial Investigation FUDS Project Number: J09CA017201

U.S. ARMY CORPS OF ENGINEERS

BUILDING STRONG®

Fact Sheet

2020

## Overview

Holtville Rocket Target 1R (#94) is a Formerly Used Defense Site (FUDS) located approximately 8 miles north-northeast of the city of Holtville in Imperial County, CA and is comprised of 8,202 acres. The property has one Munitions Response Site (MRS-01) named "Rocket Range" which was used from 1945 to 1953 as a low altitude practice rocket range probably by the nearby Holtville Naval Auxiliary Air Station. The Rocket Range is primarily owned by Bureau of Land Management but also has private owners in the northwest.

The Rocket Range (MRS-01) has been identified as having potential explosives hazards. Known or suspected munitions used include bombs, rockets, small arms, medium caliber munitions, and mortars.

The U.S. Army Corps of Engineers (USACE) is the organization responsible for environmental remediation of properties that were formerly owned by, leased to or otherwise possessed by the Department of Defense and transferred from DOD control prior to 17 October 1986. These properties are known as FUDS. Through the FUDS Program, USACE protects human health and the environment by investigating and, if required, remediating potential contamination.

## Remedial Investigation

USACE is coordinating a Remedial Investigation at former Holtville Rocket Target 1R (#94). The objective is to collect information, through field investigations, to determine if munitions are present that may require remedial action (clean up).

The remedial investigation will include biological and cultural surveys. The biological survey will identify what protected species are present and the cultural survey will identify if there are historic or prehistoric archaeological sites, so that biological and cultural resources are protected as mandated by law.



*Left: Advanced metal detector equipment being pulled over flat terrain.*



*Right: Portable (hand carry) advanced metal detector*

During the field investigation, workers walk or drive across the sites along designated paths with specialized metal detectors designed to determine the density and distribution of underground metal objects (anomalies) that may be military munitions. Density refers to the number of anomalies. Distribution refers to the three-dimensional location of the anomalies. The equipment and techniques used to develop that complete picture include Digital Geophysical Mapping along with Advanced Geophysical Classification. Buried items of interest will be intrusively investigated (dug up) to classify the types of anomalies that are present. Soil samples may also be taken to determine if explosives and metals associated with military munitions may exist in the soils.

If a live munitions item is found on the surface or buried, the item will be removed. Not all buried items will be dug up during the Remedial Investigation. Not all buried items will be dug up during the investigation and, if necessary, a removal phase will be conducted by USACE in the future to address any remaining items.

U.S. ARMY CORPS OF ENGINEERS SACRAMENTO DISTRICT

1325 J Street -- Room 1513 • Sacramento, CA 95814 • Phone: 916-557-5100

Email: [spk-pao@usace.army.mil](mailto:spk-pao@usace.army.mil) • Website: <http://www.spk.usace.army.mil/>

# Frequently Asked Questions

## 1. What is a right of entry document?

A right of entry is a legal form that gives USACE and its contractors permission to go onto your property for specific purposes. By signing this agreement, the landowner protects his/her rights and establishes the limits and responsibilities of USACE for its actions.

## 2. When will the Remedial Investigation activities begin?

Biological and cultural surveys are planned to be conducted in spring 2021 and will last a few weeks. Fieldwork is scheduled to begin in fall of 2021 and will last several months.

## 3. Will I be notified before USACE comes on my property?

Yes, the field team will contact you about 7-10 days before they will need access to your property. In addition,

they may contact you at the time fieldwork is occurring for your help in getting access through locked gates on your property.

## 4. How long will the investigation take?

In general, the field team will need access to your property for 1-10 days; however, because the work is completed in phases, they may need to access your property more than once.

## 5. Can I watch the fieldwork being conducted on my property?

No, except from a specified distance, due to the potential for the field team to encounter live military munitions, you will be required to remain outside of the work zone and may be required to evacuate your property while they are working nearby.

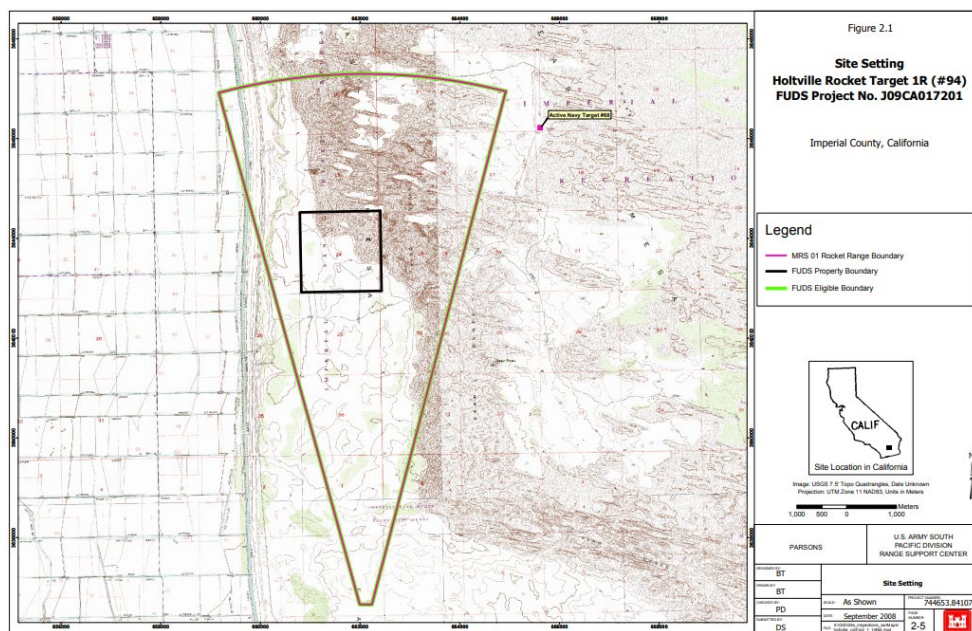
## 6. If they dig on my property, how big will the holes be?

Holes will be dug by hand and will usually be about 12 inches across by 12 inches deep; however, holes could be up to 48 inches deep. All holes will be filled back in and ground cover will be replaced. The field team will not reseed any areas.

## 7. Will I receive a copy of the findings or final report?

Information collected during the fieldwork will be summarized and analyzed in a Remedial Investigation/ Feasibility Study report. A copy of this report will be available for your review upon request. In addition, USACE will notify you about a Public Meeting during which the results of the field investigation will be presented and public feedback about future actions will be requested.

## Map of Holtville Rocket Target 1R (#94)



**Pie slice shaped boundary of Holtville Rocket Target 1R (#94) (MRS-01) shown in magenta/green.**

## Follow the 3Rs of Explosives Safety

Hazards from military munitions may still remain within the former camp. Protect yourself by following the 3Rs of Explosives Safety:

### Recognize

when you may have encountered a munition and that munitions are dangerous.

### Retreat

do not approach, touch, move or disturb it, but carefully leave the area.

### Report

call 911 and advise the police of what you saw and where you saw it.



US Army Corps of Engineers

## For More Information

Contact the U.S. Army Corps of Engineers Sacramento District Public Affairs Office at 916-557-5100 or [spk-pao@usace.army.mil](mailto:spk-pao@usace.army.mil). To learn more about the FUDS Program, visit [www.fuds.mil](http://www.fuds.mil).

